

Fruitvale & Area A News



Keeping the Community Informed
January 2021

CANDY CANE LANE MULTI-GENERATIONAL COLOURING/TRIVIA CONTEST

Congratulations to the winners of our Candy Cane Lane Multi-Generational Colouring/Trivia Contest. **Santa** and **the Grinch** were seen delivering prizes to the winners on December 17.

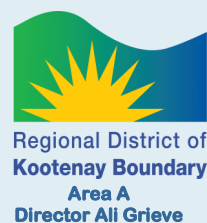


The following quote was received from a parent of one of the winners:

"It was such a good way to research Fruitvale...I've lived in Fruitvale for close to 35 years in total and didn't realize how much information I even didn't know. She learned a lot of Fruitvale history, which will be with her now forever. Thanks again and great job!"

Stay tuned for more Fruitvale trivia contests in 2021.

A huge thank you goes out to our corporate sponsors! Without their support we would not be able to have these wonderful events for our community.



LOCAL GOVERNMENT CONTACT INFORMATION



VILLAGE OF FRUITVALE

1947 Beaver Street
Fruitvale, BC V0G 1L0
Ph: 250-367-7551
Fax: 250-367-9267

Public Works &
After Hours Emergencies:
250-367-6162

General Email

info@village.fruitvale.bc.ca

Web

www.village.fruitvale.bc.ca

Facebook

Village of Fruitvale



REGIONAL DISTRICT OF KOOTENAY BOUNDARY

202 - 843 Rossland Ave
Trail, BC V1R 4S8
Ph: 250-368-9148

General Email

RDKB email addresses are
most often **first initial, last
name @rdkb.com**
(For example Joe Smith would
be jsmith@rdkb.com)

Web

www.rdkb.com

Area 'A' Director Ali Grieve

aligrieve@telus.net

COVID-19 HAS NOT DISAPPEARED!

**Please continue to practise safe distancing, wash and sanitize hands,
wear a face covering, stay home when you're sick or feeling unwell, and
stay within your bubble.**

BE KIND, BE CALM, BE SAFE



Mayor's Message

Happy New Year! As we ring in the New Year we are hopeful and optimistic to work our way back over the coming months to a lifestyle similar to the one we enjoyed pre-COVID-19. I think when this pandemic is under control and no longer a threat to anyone in our society, our lifestyle will be similar but improved with what we've learned about what is important to each of us, and what we want to focus on in our lives going forward.

There already is work being done on weaknesses that we were living with but were magnified by the pandemic, things such as weak rural internet service (for meetings, careers, doctor appointments, communication, entertainment, etc.), food security so we are not so reliant on other countries for food, and affordable housing so people are more secure in their homes when their income changes. COVID-19 has been a big challenge and has really hurt a lot of people, but there are positives to take from it to build a better, safer future for us all.

Be kind, be patient, be safe, and have a Happy 2021.

Mayor Steve Morissette

VILLAGE OFFICE CLOSURE

The Village Office remains closed to the public however staff is in the office during regular office hours.

If you have any business to conduct at the Village Office please call the office at 250-367-7551 or email info@village.fruitvale.bc.ca. We will respond to your enquiry within 24 hours. Please check the Village website, www.village.fruitvale.bc.ca, and Facebook page for up-to-date details as they develop.

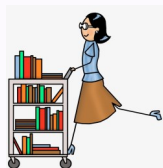
We are sorry for any inconvenience this office closure may cause and thank you for your understanding; working together, we can make a difference.

GARBAGE BAGS: For residents needing garbage bags, please call the Village Office to make arrangements for pick-up.

COMMUNITY NEWS

BEAVER VALLEY LIBRARY

The BV Public Library hours are:
Mondays 4:00 - 8:00pm
Tuesdays - Noon - 5:00pm
Wednesdays - Noon - 5:00pm
Thursdays - Noon - 5:00 pm



2021 COUNCIL AND COMMITTEE OF THE WHOLE MEETING DATES

Regular Council

January 11, 2021
February 8, 2021
March 8, 2021
April 12, 2021
May 10, 2021
June 14, 2021
July 12, 2021
August 9, 2021 – If Required
September 13, 2021
October 4, 2021
November 8, 2021
December 6, 2021

Committee of the Whole

January 25, 2021
February 22, 2021
March 22, 2021
April 26, 2021
May 31, 2021
June 28, 2021
July 26, 2021 – If Required
August - Call of the Chair
September - Call of the Chair
October 18, 2021
November 22, 2021
December 20, 2021

Meetings are held via Zoom at <https://us02web.zoom.us/j/3353726693>
Meeting ID: 335 372 6693

January 11 Regular Council meeting starts at 6:00 pm.
All other meetings start at 4:00 pm.

BEAVER VALLEY YOUTH ACTION NETWORK



The Beaver Valley Youth Action Network is excited to announce that they will be hosting a 'Ski Red' program this winter.

If you are interested in this program and want more information, please email Tammy Gallamore, Beaver Valley Youth Action Network Coordinator at beavervalleyyan@gmail.com and follow BVYAN on Facebook at <https://www.facebook.com/BVYouthCouncil>

Area A - January Update

Director Ali Grieve, Electoral Area A

With 2020 behind us, it's impossible not to reflect on the challenges brought by the global pandemic and to hope that 2021 brings fewer of them. At the same time, it's important to reflect on positive highlights in the RDKB. Here is some of what we accomplished in 2020:

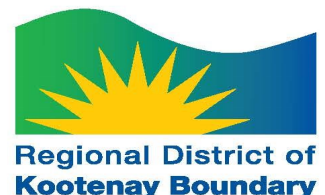
- Participated in the former Beaver Valley Middle School Planning Workshop to create new housing in the area.
- Partnered with the Regional District of Central Kootenay on a new organics collection and composting infrastructure program for Area A and the entire McKelvey Creek Regional Wasteshed that includes Fruitvale, Montrose, Trail, Rossland and Area B/Lower Columbia-Old Glory. That program will launch in 2022.
- Reached nearly 10,000 visits to our online engagement site, jointheconversation.rdkb.com after first launching it in 2019. We were fortunate to have this virtual method for everyone in our region to participate in projects important to us all, especially during the pandemic.
- Hired a new Bylaw Enforcement Officer who is educating residents about our bylaws, their purpose and requirements so that people have the information they need to comply.
- Developed a new bylaw adjudication process so that when we issue tickets and fines to enforce our bylaws in 2021, the process will be transparent, fair and effective for everyone. Our Board of Directors will vote on adopting the new *Bylaw Notice Enforcement Bylaw* in January 2021.
- RDKB Planning staff worked closely with consultants to complete a housing needs assessment for the area. That assessment is now available for review and download at jointheconversation.rdkb.com.
- Participated in a Shop Local campaign to encourage residents to support local businesses.
- Honoured and recognized our Beaver Valley Graduating Class of 2020.
- Engaged in early discussions with REN Energies for a proposed Renewable Natural Gas(RNG) facility in Area A.
- Launched our [new website](#) for [public feedback](#) before it is finalized in 2021.

Our Community Charter requires that all local governments share their draft budgets with communities. You're invited to participate in our virtual 2021 RDKB Town Hall for Area A on Monday, February 8 at 6:00 p.m.

Go to jointheconversation.rdkb.com or to rdkb.com to register.

I look forward to seeing some of you then. In the meantime...

May this new year see you loving, giving and living!



202 – 843 Rossland Ave, Trail, BC V1R 4S8 | T: 250.368.9148 | T/F: 1.800.355.7352 | rdkb.com

UPCOMING REGIONAL DISTRICT OF KOOTENAY BOUNDARY MEETINGS

Utilities Committee

Wednesday, January 13
11:00 am
Zoom Videoconference

Board of Directors

Wednesday, January 13
1:00 pm
Zoom Videoconference

Electoral Area Services

Thursday, January 14
10:30 am
Zoom Videoconference

BV Recreation Committee

Tuesday, January 19
9:00 am
Zoom Videoconference

East End Services Committee

Tuesday, January 19
10:30 am
Zoom Videoconference

Board of Directors

Thursday, January 28
1:00 pm
Zoom Videoconference

2021 DOG TAGS (licenses)



The 2021 dog tags (licenses) will be available for purchase on **January 4, 2021**. Call the office to make arrangements for purchase and pick-up of your dog tag.

All dogs in the Village are required to be licensed. Cost for a license is \$25.00 for a spayed or neutered dog and \$75.00 for an unaltered dog. A current year tag on your dog will ensure that it is returned to you if it is found out of your yard. It's a small price to pay for the safe return of your family pet.

Please remember that it is a contravention of the Dog Tax and Regulation Bylaw No. 728 to allow your dogs to run free. Dogs at large run the risk of being picked up by the SPCA and fines will be levied to the dog owner.

Please, for the safety, peace and comfort of your neighbours, ensure your dog(s) are secure in your house or yard and do not let them bark continually at all hours day and night.

2021 BUSINESS LICENSES

Attention all business license holders. Invoices for the 2021 Village of Fruitvale Business Licenses will be mailed out at the beginning of January. The business license fee has not increased for the year. Payment for business licenses can be made by cheque left in the drop box at the Village Office or by e-transfer.

CHRISTMAS TREE DROP OFF



The Village of Fruitvale will once again be taking Christmas trees to the landfill free of charge after the Christmas season. Please bring your tree to the designated area (**look for the sign**) in the Pole Yard before **January 12**. **There will be no curb-side tree collection.** Please ensure all decorations and plastic tree bags have been removed when you drop off your tree.

BOULEVARD PARKING DURING SNOW REMOVAL

Residents are reminded that during the winter months the boulevard is where snow is to be when plowing and pushing back snow. This means that residents are required to find off-street parking during the winter months.

Anyone parked on the boulevard is subject to their vehicle being plowed in during snow removal. Snow removed to create a boulevard parking space must be stored on the boulevard and not placed back on the street. Also, anyone found creating a snow berm at the curb to make a "parking space" on the boulevard will be asked to remove it.

A number of safety and liability issues arise whenever a road is effectively blocked, as is the case when residents pile snow in travel lanes. Residents and emergency vehicles can be impeded, forcing the Village to remove the snow. Please be advised that the cost of an additional call-out to clear a blocked street shall be billed to the appropriate address.

The Village cannot condone the transport or plowing of snow by non-contracted private parties from properties along the Village streets due to liability issues. The Village therefore kindly requests the full cooperation and collaboration of all its residents during snowfall. If there is a compelling set of circumstances that do not allow on-site snow storage in line with Village policy, Fruitvale officials will address that problem.

"NAME THAT PARK" CONTEST

The "Name That Park" contest has closed and votes have been tabulated. Voting was as follows:

PARK COMPLEX

Beaver Siding Complex - 5 votes
BV Diamond Recreational Park - 3 votes
Fruitvale Family Fields - 5 votes
Fruitvale Memorial Parks - 13 votes
Haines Park - 12 votes

LOWER LEWIS FIELD

Beaver Siding Park - 5 votes
Shirley Levesque Park - 2 votes
Ella Matteucci Park - 37 votes

The Parks Complex as a whole will be known as **FRUITVALE MEMORIAL PARKS** and Lower Lewis Field will be known as **ELLA MATTEUCCI PARK**.

Congratulations to Joanna Simpson for her nomination of Fruitvale Memorial Parks and to the person who wishes to remain anonymous for the nomination of Ella Matteucci Park.

VILLAGE OF FRUITVALE GARBAGE & RECYCLING DATES

JANUARY

S	M	T	W	T	F	S
					1	2
3	4	5	6	7	8	9
10	11	12	13	14	15	16
17	18	19	20	21	22	23
24	25	26	27	28	29	30
31						

LEGEND

- South Side Garbage
- North Side Garbage
- South Side Recycling
- North Side Recycling

Please keep household garbage and recycling in a secure location until the morning of garbage day and recycling day.

FRUITVALE FUN FACTS (from the Candy Cane Lane Colouring/Trivia Contest)

Do you know who plants the flowers in the Welcome to Fruitvale sign planter?

Joyce Buckler

Do you know who the Mayor of Fruitvale is?

Steve Morissette

Where is the footbridge to the Elementary School located and how old is it?

It's on Beaver Street and it is ??? years old. If anyone knows when the footbridge was built, let us know.

What church is located on Columbia Gardens Road? When was it built?

Anglican/United Church built in 1963

Who is the RDKB Area A Director and what does she do for Fruitvale and Area A?

Ali Grieve is the RDKB Area A Director who on behalf of Area A residents donates and supports programs and events in Fruitvale

What is the name of the big park and where is it located?

Haines Park on Columbia Gardens Road

What was the South Columbia Search and Rescue building used for before SCSAR?

The Beaver Valley Legion

Where is the little building with the mural painted on it located and what is its purpose?

It is the Maple Street Pumphouse and it is to pump water

CANDY CANE LANE TRIVIA CONTEST ANSWERS

1. What Avenue would you take to find a Christmas Tree? **PINE**
2. What does Santa put in your stocking if you are bad? **COAL/COLE**
3. If you were going skiing, where do you go? **MOUNTAIN**
4. Five cents will take you down what street? **BEAVER**
5. What forest is in California and is a drive in Fruitvale? **REDWOOD**
6. What park is by water? **CREEKSIDE**
7. On December 10, 1956, a theatre opened in Fruitvale, what was its name? **PREMIER**
8. What was Fruitvale's original name? **BEAVER SIDING**
9. In the 1940s and '50s what was Nelson Avenue's nickname? **SWEDE ALLEY**
10. What lake is a winner? **CHAMPION**
11. When the flowers start to bloom in Fruitvale, who did it? **BV BLOOMING SOCIETY**
12. Where was Leckett's in Fruitvale? **COUNTRY ROADS**
13. What colour is this road? **GREEN**
14. Who was the first kindergarten teacher in Fruitvale? **MRS. MORISSETTE** (Mayor Morissette's mom)
15. What bird of prey plays in Fruitvale? **NIGHTHAWK**
16. What Garden Road do you see your doctor on? **COLUMBIA GARDENS ROAD**
17. What bird sits on a corner? **BLUEBIRD**
18. When it goes in the gutter, where are you? **BV BOWLING LANES**
19. What is the oldest, still current business in Fruitvale? **FRUITVALE CO-OP**
20. Behind the glass you watch the rocks slide, where are you? **BV CURLING RINK**
21. Buy me some peanuts and cracker jacks, where are you? **HAINES PARK**
22. In the day, where would you find the big bands playing in Fruitvale? **FRUITVALE MEMORIAL HALL**
23. Where was the Fruitvale ski hill? **ON WEBSTER/WILSON ROAD**
24. What is the Fruitvale lagoons' nickname? **MACKAY LAKE**

BEAVER VALLEY AGE FRIENDLY COMMUNITY

JANUARY 2021



JANUARY 19 – SENIORS' BOXED LUNCH

Pre-registration is a must - deadline to register is January 13. To pre-register, please call or email the Village Office at 250-367-7551 or info@village.fruitvale.bc.ca with your name, phone number, and whether you are from Area A, Fruitvale or

Montrose. Please note that you must be 55+ to participate. Pick-up at Fruitvale Memorial Centre front entrance on **Tuesday, January 19 at 12:30 pm.**

Something New - Activities to keep your brain active:

Here are some word games and a colouring page to keep your brain active during the month. Have fun!

Fruits

Y	R	R	E	B	P	S	A	R	T	E	A	L	M
A	E	N	B	L	A	C	K	B	E	R	R	Y	I
B	I	P	E	N	B	W	G	A	A	R	R	W	E
R	R	A	E	A	O	A	A	Y	N	P	R	A	N
R	E	K	W	C	O	T	O	S	A	A	L	P	G
B	R	I	I	A	Y	E	B	T	N	P	E	P	R
W	O	W	Y	A	R	R	L	R	A	A	M	L	A
W	R	I	N	R	R	M	U	A	B	Y	O	E	P
R	A	K	O	O	B	E	E	W	L	A	N	B	E
P	N	L	L	C	I	L	B	B	K	E	E	R	G
A	G	B	C	I	I	O	E	E	B	R	E	Y	A
R	E	E	E	B	M	N	R	R	R	S	E	O	I
A	O	E	N	K	O	E	R	R	E	G	N	C	E
C	E	G	B	Y	B	M	Y	Y	I	E	O	Y	E

BLACKBERRY RASPBERRY LEMON
LIME APPLE BANANA
BLUEBERRY WATERMELON KIWI
PAPAYA STRAWBERRY
ORANGE GRAPE

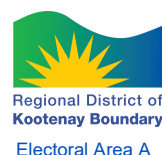
Play these puzzles and many more
online at <https://thewordsearch.com>

Safari Animals

E	E	L	A	N	D	P	E	L	H	O	D	N	E
A	R	N	B	G	E	F	I	B	A	B	O	O	N
C	H	E	E	B	F	O	E	L	L	E	Z	A	G
R	I	O	L	A	N	N	R	K	N	A	I	E	E
O	N	E	R	B	U	F	F	A	L	O	L	Z	N
C	O	I	O	S	O	K	U	D	U	I	T	O	W
O	G	A	E	P	P	Z	Z	E	B	R	A	E	A
D	S	O	C	C	D	R	R	T	R	R	L	E	R
I	A	R	E	A	H	A	I	A	N	E	E	T	T
L	D	R	A	P	O	E	L	N	P	C	N	E	H
E	E	D	T	I	G	C	E	H	G	N	N	V	O
W	H	I	P	P	O	N	A	T	O	B	N	I	G
H	Y	E	N	A	C	N	T	H	A	N	O	C	A
C	P	H	F	A	T	B	O	L	O	H	G	K	L

KUDU ELEPHANT ZEBRA
LEOPARD BUFFALO CHEETAH
SPRINGBOK HIPPO CIVET
CROCODILE RHINO HYENA
BABOON WARTHOG LION
GIRAFFE GAZELLE ELAND

THANK YOU TO OUR SUPPORTING PARTNERS



Winter Wonderland

W	I	C	G	N	I	T	A	K	S	T	R	Z	D
N	D	N	A	L	R	E	D	N	O	W	D	C	L
W	O	N	R	A	R	O	R	K	A	W	O	Z	L
S	B	T	S	S	N	O	W	F	L	A	K	E	L
K	D	R	N	I	I	C	I	C	L	E	L	N	N
I	L	N	O	L	L	O	W	Y	T	S	O	R	F
I	N	T	W	L	F	L	C	S	L	S	P	N	S
N	S	R	B	A	R	L	A	N	L	L	G	I	N
G	L	E	A	F	O	T	L	N	I	P	P	Y	S
N	K	T	L	W	Z	S	L	E	D	D	I	N	G
A	S	N	L	O	E	L	G	L	I	S	T	E	N
D	D	I	W	N	N	Z	N	A	D	L	O	C	T
S	O	W	E	S	D	R	A	Z	Z	I	L	B	O
W	H	O	T	C	H	O	C	O	L	A	T	E	I

NIPPY
 SNOWBALL
 HOT CHOCOLATE
 SNOWFLAKE
 FROSTY
 ICICLE
 SKATING
 WONDERLAND
 SLEDDING
 FROZEN
 BILZZARD
 SKIING
 SNOWFALL
 GLISTEN
 WINTER

Fun things to do

C	E	E	N	T	O	Y	S	N	E	K	E	O	E
S	R	A	P	P	P	U	Z	Z	L	E	S	Z	O
O	I	T	I	O	E	S	D	R	A	C	I	E	C
G	W	I	E	K	S	S	P	E	R	G	C	T	N
N	A	N	I	E	N	D	S	I	S	S	R	S	L
I	L	G	O	R	R	T	I	B	L	E	E	E	L
Y	K	G	P	K	E	G	I	R	O	I	X	I	A
A	I	N	A	P	A	A	P	F	R	V	E	B	B
L	N	I	R	K	D	K	A	E	L	O	E	B	T
P	G	D	K	K	I	P	S	A	R	M	T	O	O
D	I	I	T	G	N	L	O	F	L	O	G	H	O
R	G	R	R	L	G	S	G	L	R	N	L	R	F
B	A	S	E	B	A	L	L	P	O	D	E	R	L
R	U	N	N	I	N	G	D	R	I	V	I	N	G

EXERCISE
 GOLF
 POLO
 WALKING
 HOBBIES
 EATING
 CARDS
 PETS
 BASEBALL
 POKER
 READING
 RUNNING
 PARK
 FOOTBALL
 DRIVING
 PLAYING
 RIDING
 TOYS

